

REV	DESCRIPTION	DATE	APPROVED
NEW	ORIGINAL RELEASE	07/16/2021	L.MARKOSSIAN
-	-	-	-
-	-	-	-

GENERAL NOTES:

- 10. PACKAGE TO PREVENT DAMAGE IN SHIPPING AND HANDLING.
- 12. DO NOT SCALE DRAWING.
- 13. DEBURR AND BREAK EDGES .005 TO .060. INTERNAL CORNER R.050 TO R.250.

MATERIAL NOTES:

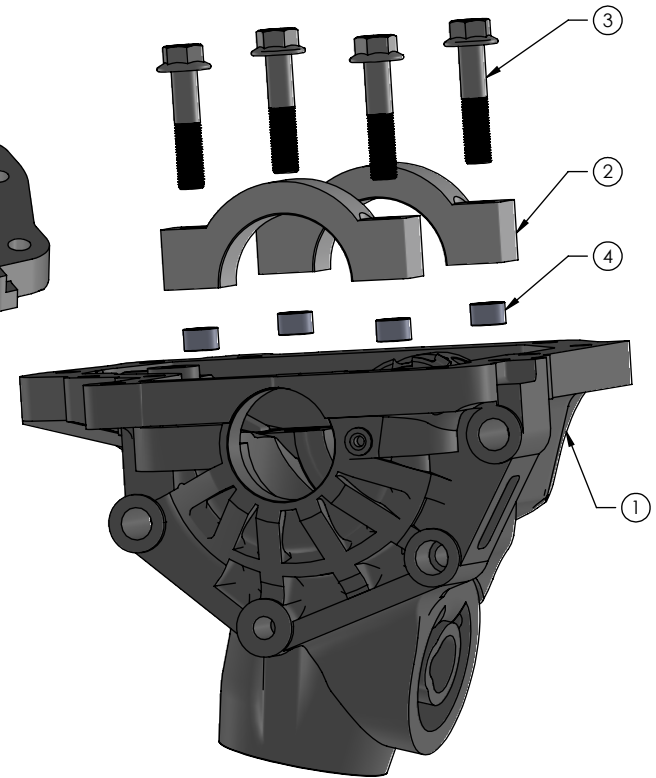
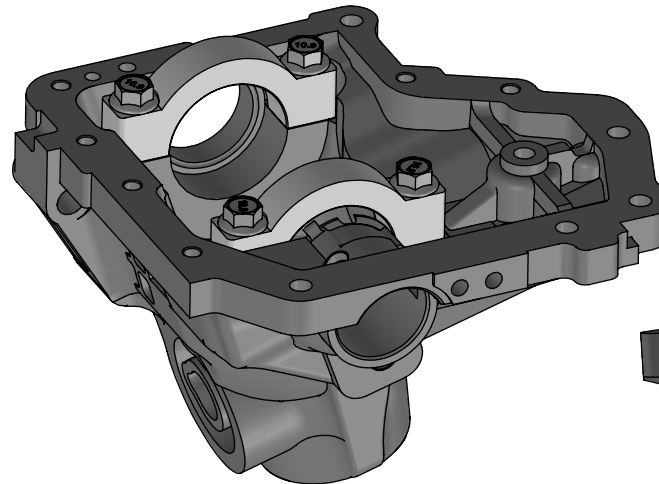
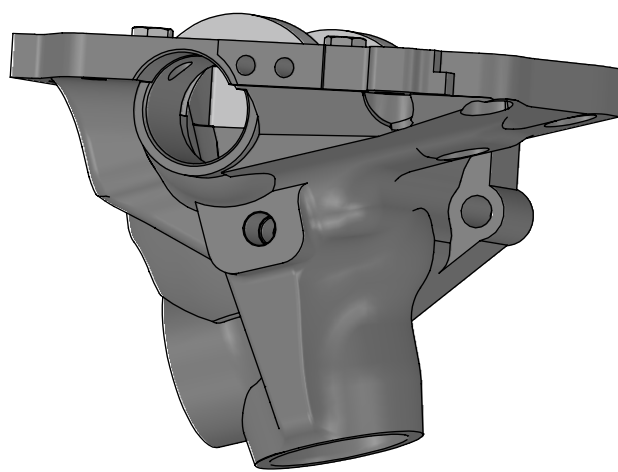
20 MAKE FROM ALUMINUM AS 6063-T6.

ASSEMBLY NOTES:

30 OPTIONAL; MATCH SET DIAMETERS, FINAL PASS REQUIRED WHILE ASSEMBLED:

- ASSEMBLE ITEM 2 AND 1 WITH PROVIDED DOWEL PIN LOCATORS 4. TORQUE BOLTS OR ITEM 3 TO 47-68 ft-lbf BEFORE MACHINING FINAL REQUIRED DIAMETER.
- KEEP MATCHED SETS 2 AND 1 TOGETHER WITH BOLTS 3 FOR SHIPPING.

RFQ DRAWING



QTY REQ'D	F/N	P/N	DESCRIPTION	MAT/SPEC
4	4	-	DOWEL PIN LOCATORS	PROVIDED
4	3	95735A122	BOLT (McMASTER-CARR PART NUMBER) M12X1.25 - 6H (55MM LONG)	-
2	2	-	BEARING CAP	20 21
1	1	-	BIG HALF	20 21
BILL OF MATERIALS				

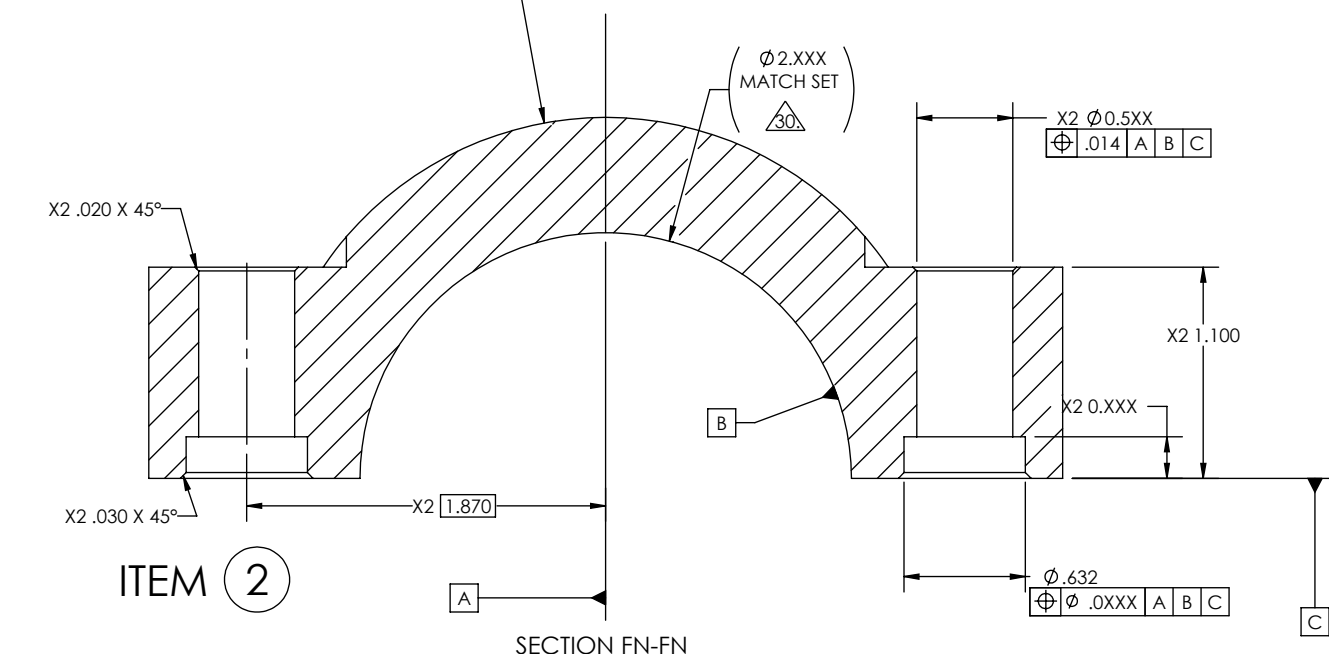
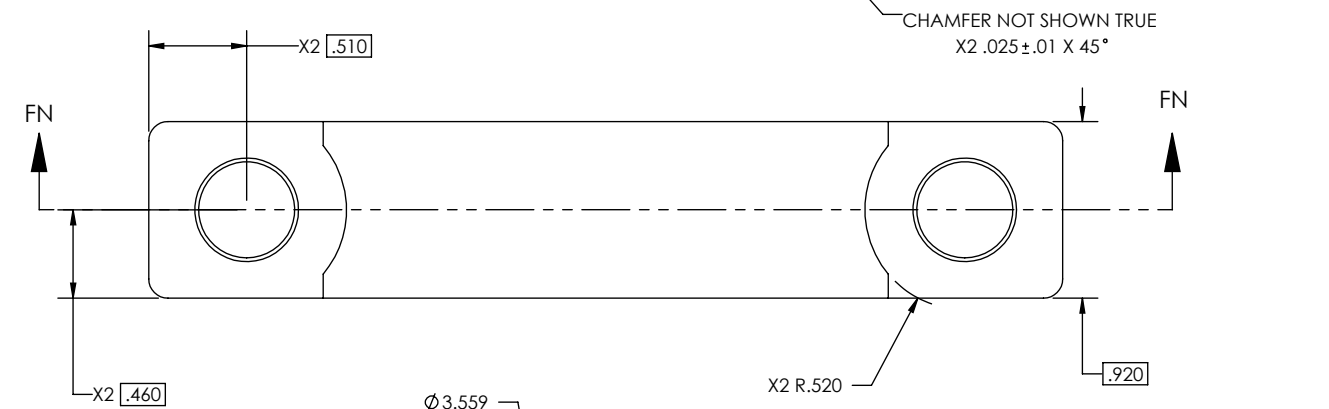
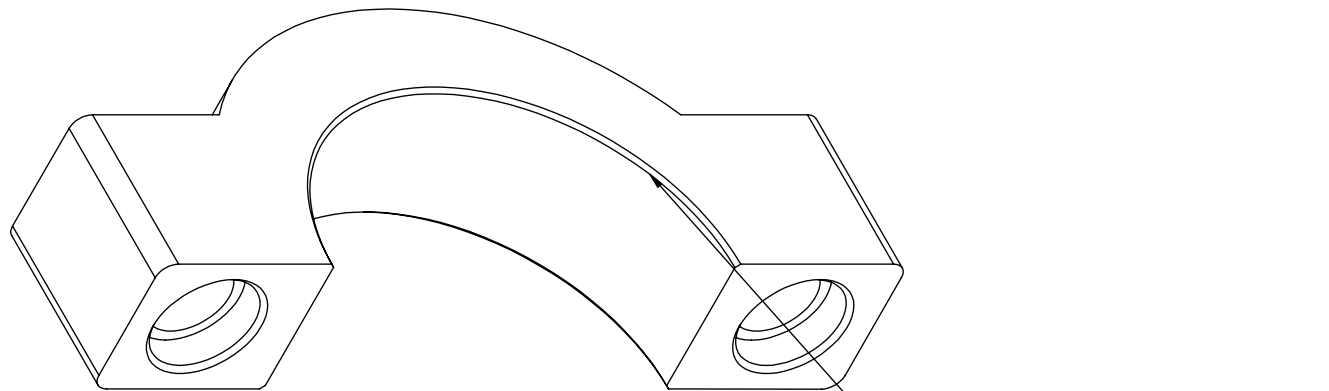
UNLESS OTHERWISE SPECIFIED DIMENSIONS ARE IN INCHES - TOLERANCES -		
DECIMALS	ANGULAR	
.X ±.03	XX' ±.1°	
.XX ±.015	XXX' ±.1°	
.XXX ±.01	SURFACE FINISH	
.XXXX ±.0005	125 μINCH RG PER ASME B46.1	
INTERPRET TOLERANCES PER ASME Y14.5M-2009		



BIG HALF

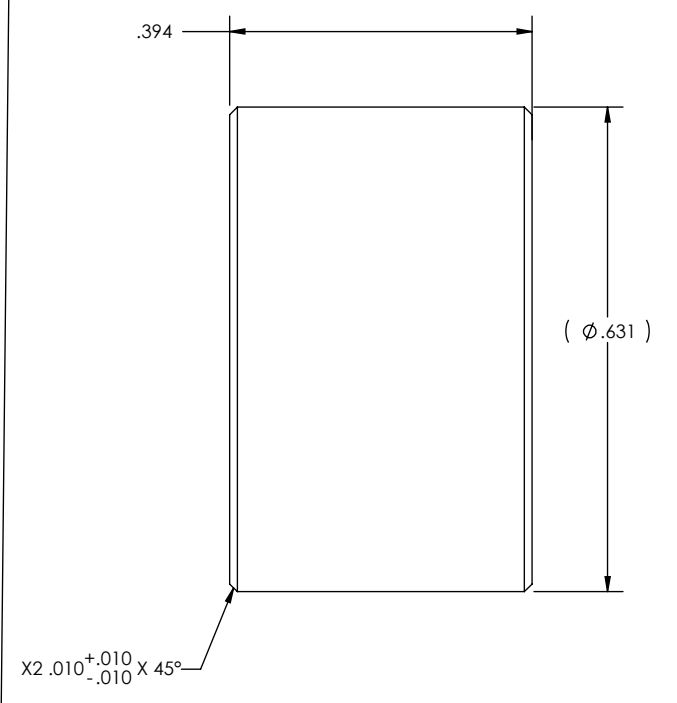
REV LTR NEW V68

PROPRIETARY NOTICE: This drawing/information/statement contains proprietary trade secret information of Overspeed Motorsports ("OS"). It is submitted to you for purposes of a business relationship with OS and is provided to you under a condition of confidentiality. This drawing/information/statement may be used by you solely for the purpose for which it is furnished and returned to OS upon request. Except for purposes of the actual or proposed business relationship with OS, this drawing/information/statement and the information contained therein is not to be reproduced, transmitted, disclosed, or used in whole or in part, without the express written authorization of OS.



ITEM 2

SECTION FN-FN

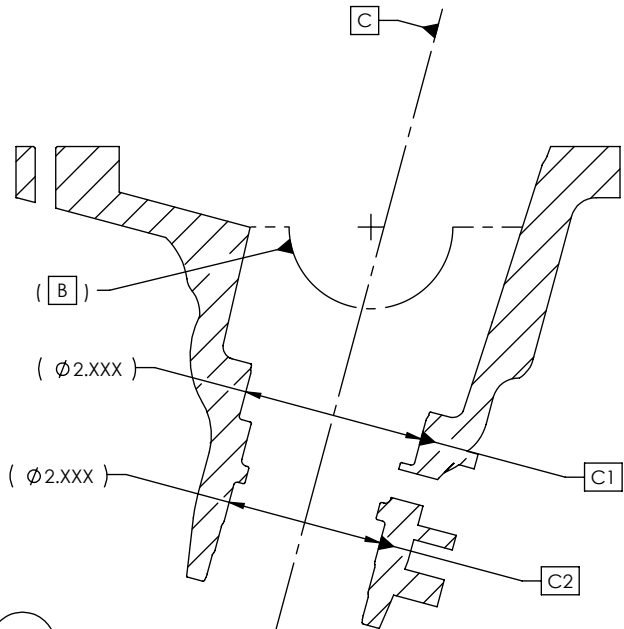
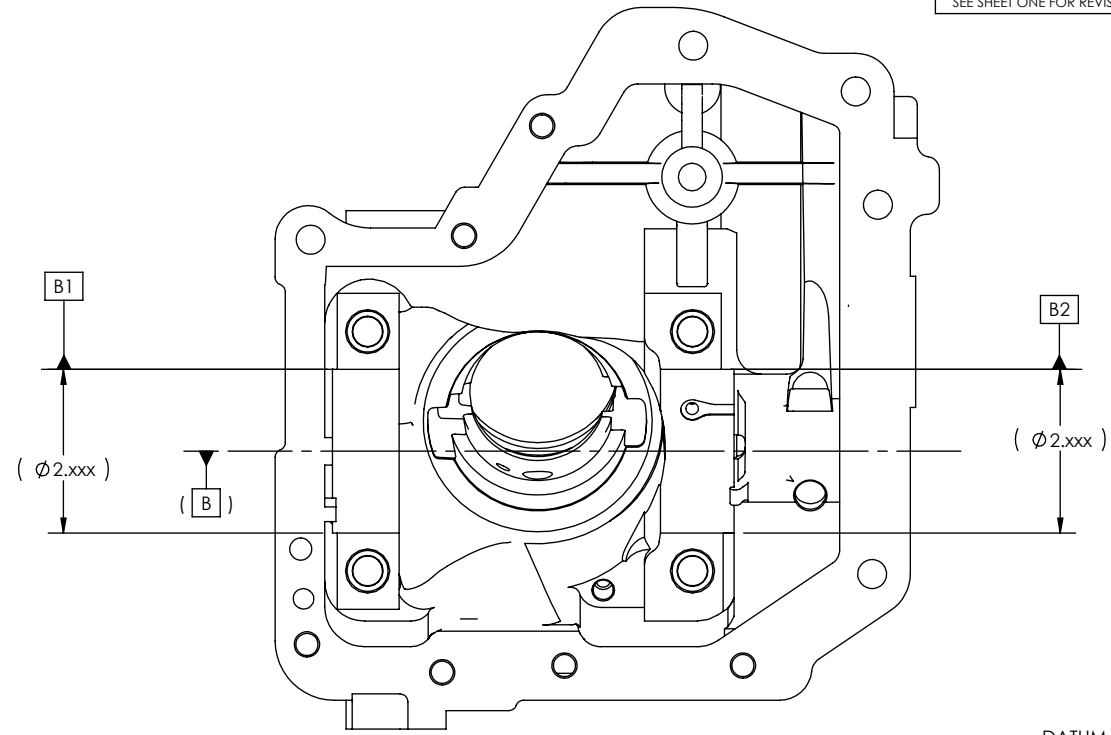
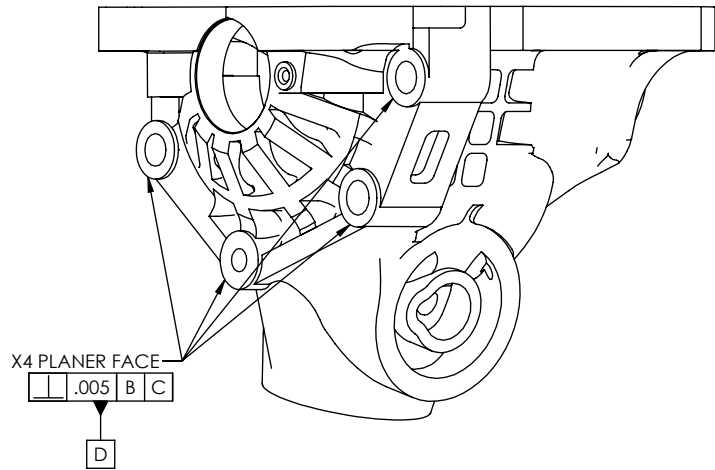


ITEM 4 PROVIDED WITH MODIFICATION.



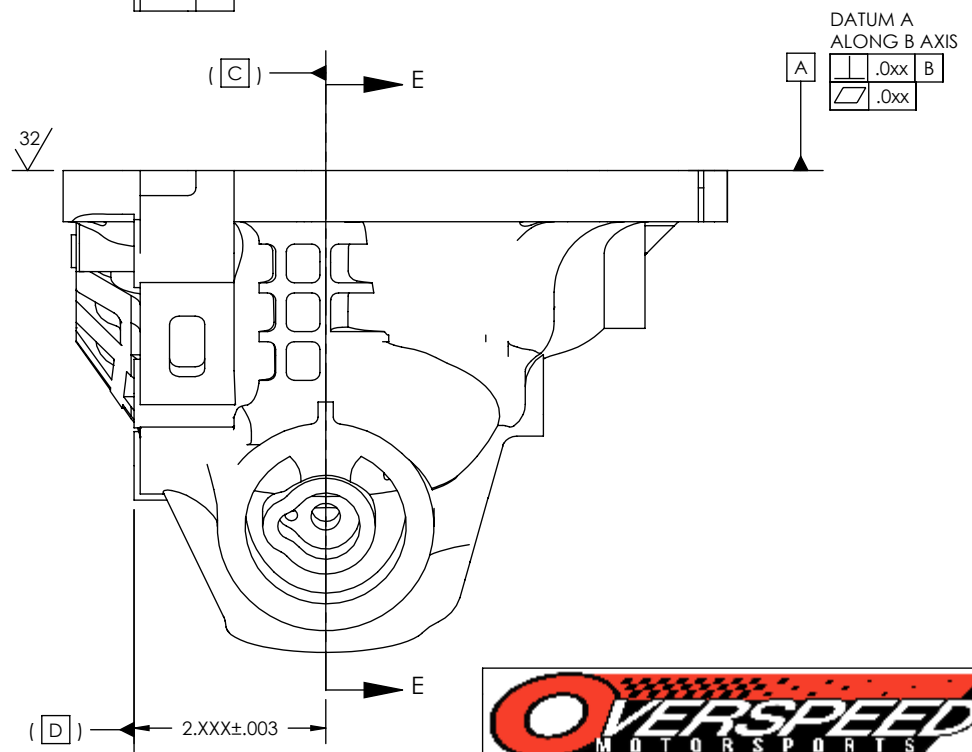
PROPRIETARY NOTICE: This drawing/information/statement contains proprietary trade secret information of Overspeed Motorsports ("OS"). It is submitted to you for purposes of a business relationship with OS and is provided to you under a condition of confidentiality. This drawing/information/statement may be used by you solely for the purpose for which it is furnished and returned to OS upon request. Except for purposes of the actual or proposed business relationship with OS, this drawing/information/statement and the information contained therein is not to be reproduced, transmitted, disclosed, or used in whole or in part, without the express written authorization of OS.

APVD	L.MARKOSSIAN	07/16/2021	DWG NO:	BIG HALF	REV LTR NEW V68
4	3	2	SHEET SIZE: A	SCALE: NONE	Sheet 2 of 32



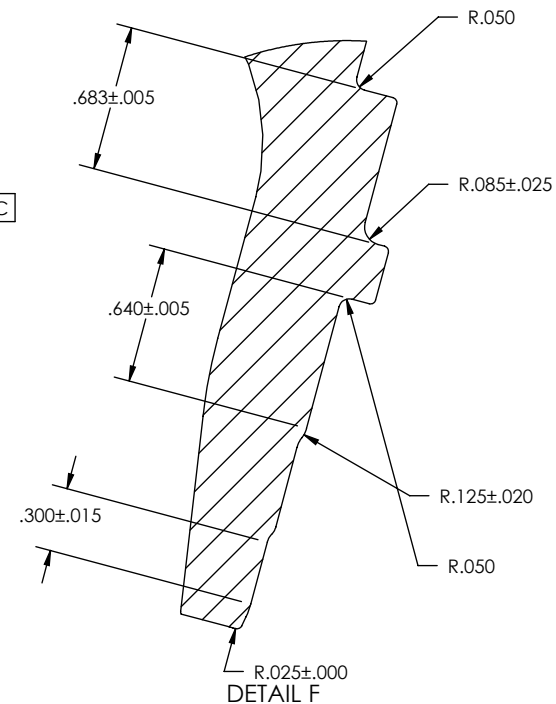
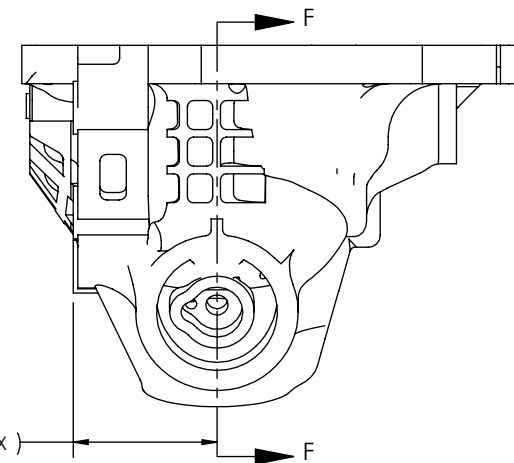
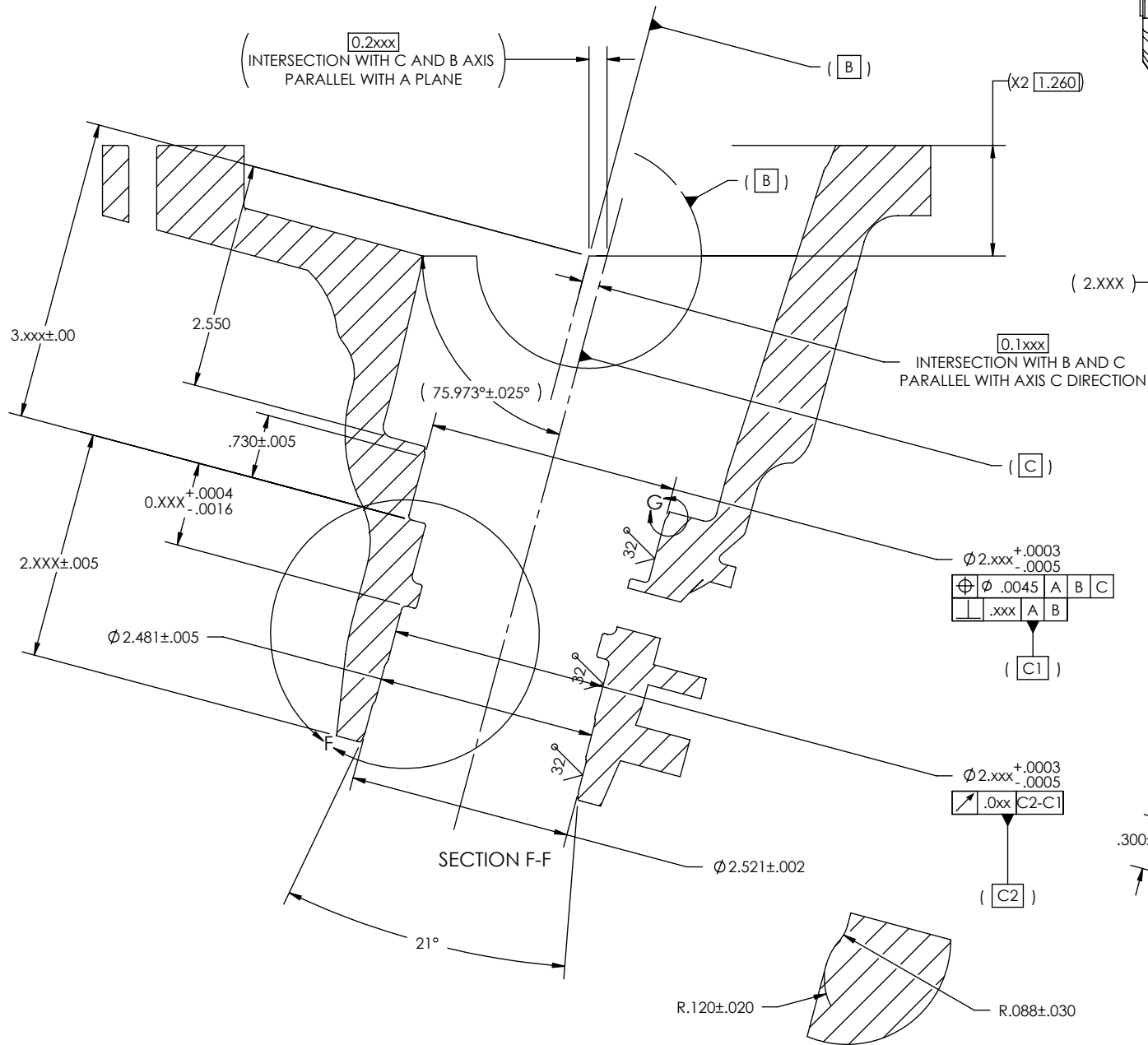
ITEM 1

SECTION E-E



PROPRIETARY NOTICE: This drawing/information/statement contains proprietary trade secret information of Overspeed Motorsports ("OS"). It is submitted to you for purposes of a business relationship with OS and is provided to you under a condition of confidentiality. This drawing/information/statement may be used by you solely for the purpose for which it is furnished and returned to OS upon request. Except for purposes of the actual or proposed business relationship with OS, this drawing/information/statement and the information contained therein is not to be reproduced, transmitted, disclosed, or used in whole or in part, without the express written authorization of OS.

APVD	L.MARKOSSIAN	07/16/2021	DWG NO:	BIG HALF	REV LTR NEW V68
			SHEET SIZE: A	SCALE: NONE	Sheet 3 of 32



DETAIL G



PROPRIETARY NOTICE: This drawing/information/statement contains proprietary trade secret information of Overspeed Motorsports ("OS"). It is submitted to you for purposes of a business relationship with OS and is provided to you under a condition of confidentiality. This drawing/information/statement may be used by you solely for the purpose for which it is furnished and returned to OS upon request. Except for purposes of the actual or proposed business relationship with OS, this drawing/information/statement and the information contained therein is not to be reproduced, transmitted, disclosed, or used in whole or in part, without the express written authorization of OS.

APVD L.MARKOSSIAN

07/16/2021

SHEET SIZE: A

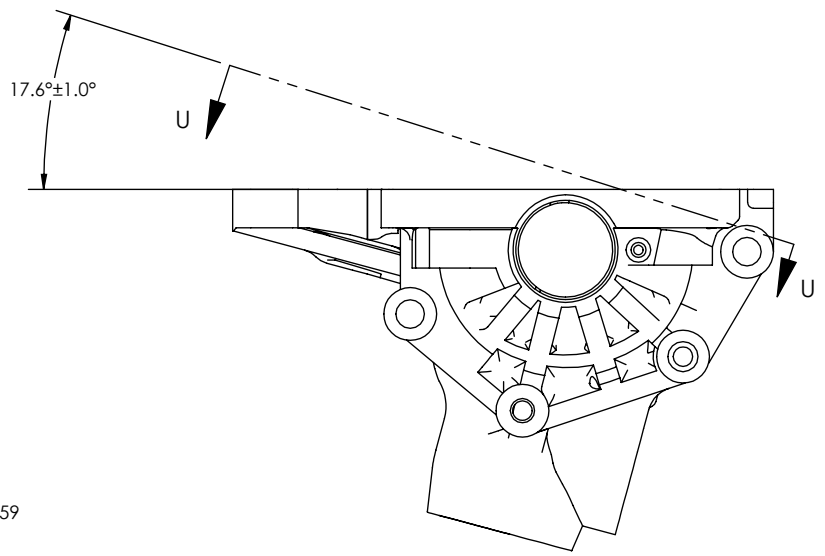
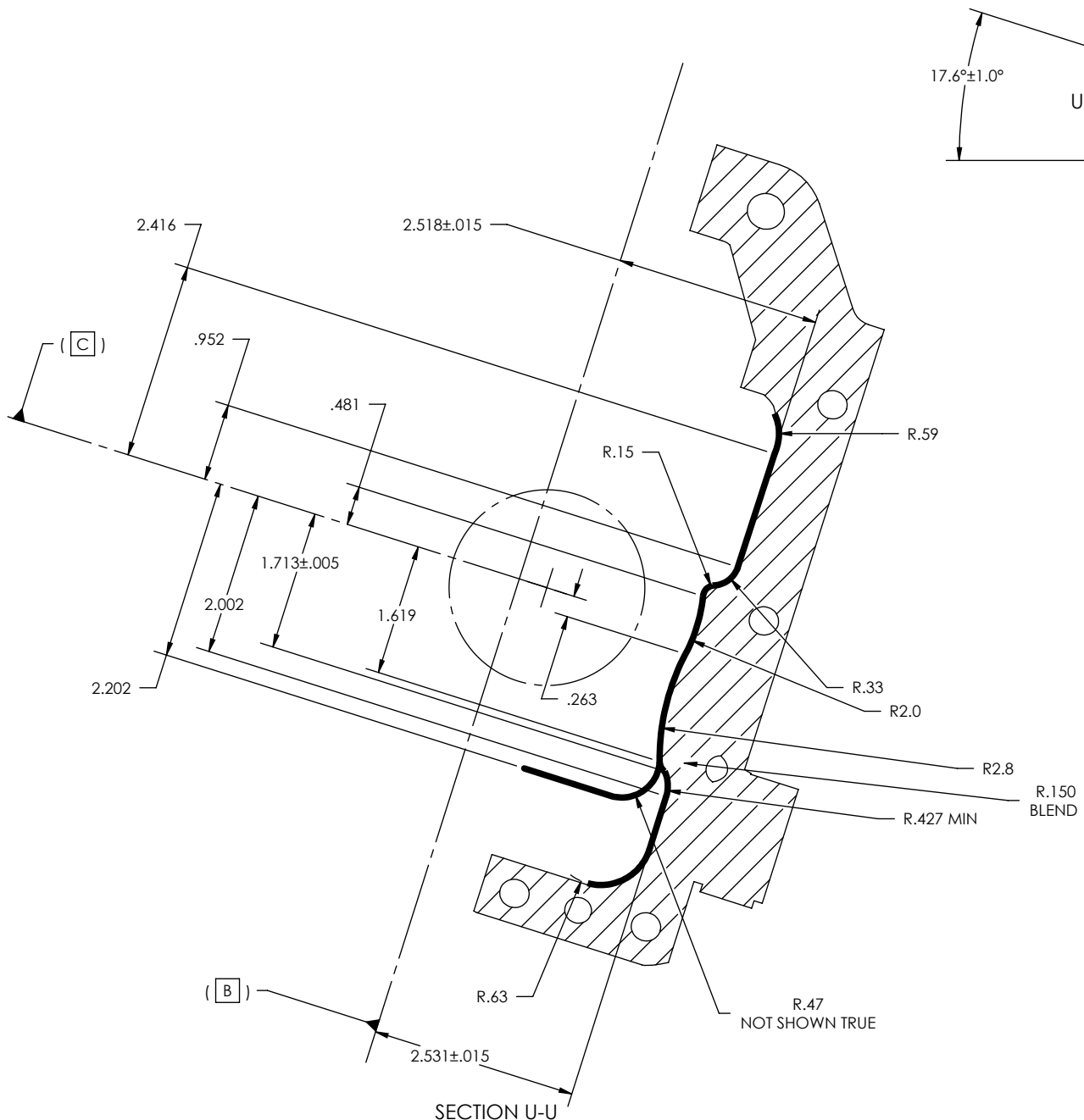
SCALE: NONE

Sheet 4 of 32

DWG NO:

BIG HALF

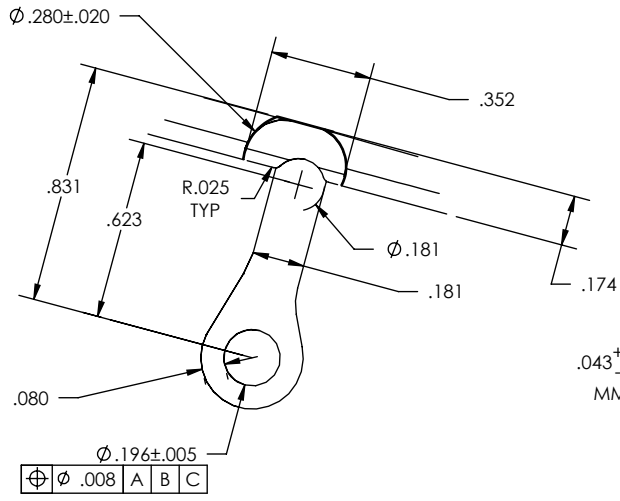
REV LTR
NEW
V68



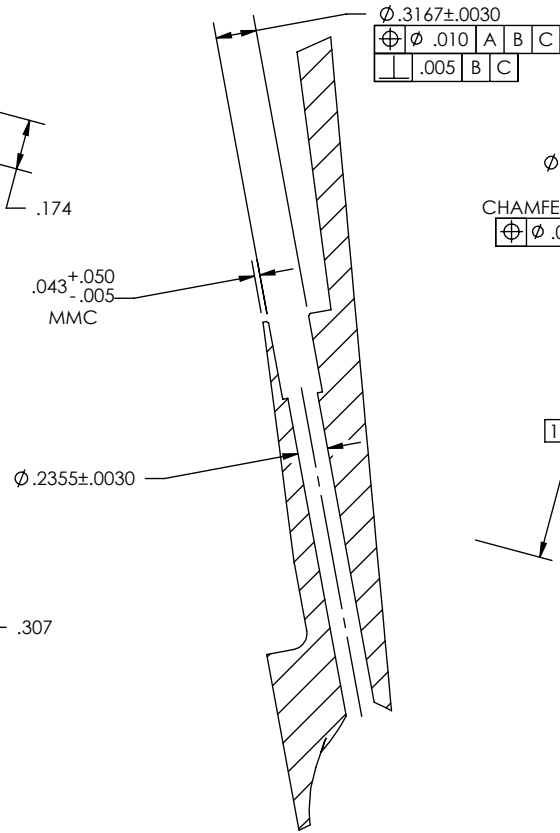
PROPRIETARY NOTICE: This drawing/information/statement contains proprietary trade secret information of Overspeed Motorsports ("OS"). It is submitted to you for purposes of a business relationship with OS and is provided to you under a condition of confidentiality. This drawing/information/statement may be used by you solely for the purpose for which it is furnished and returned to OS upon request. Except for purposes of the actual or proposed business relationship with OS, this drawing/information/statement and the information contained therein is not to be reproduced, transmitted, disclosed, or used in whole or in part, without the express written authorization of OS.



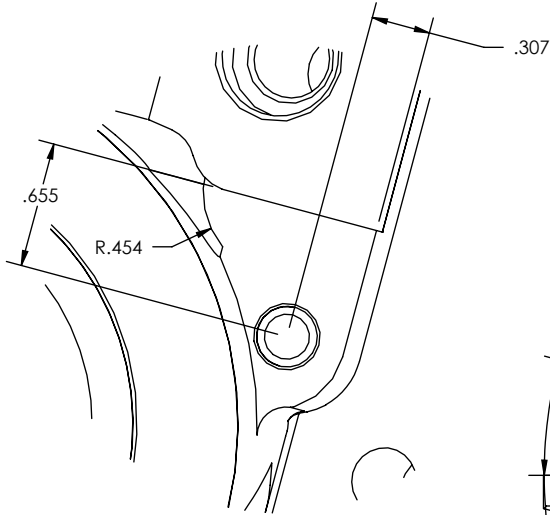
DWG NO:	BIG HALF	REV LTR NEW V68
APVD	L.MARKOSSIAN	07/16/2021
SHEET SIZE:	A	SCALE: NONE
Sheet 12 of 32		1



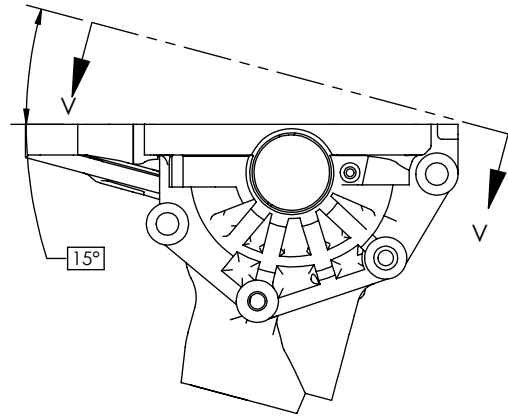
DETAIL X



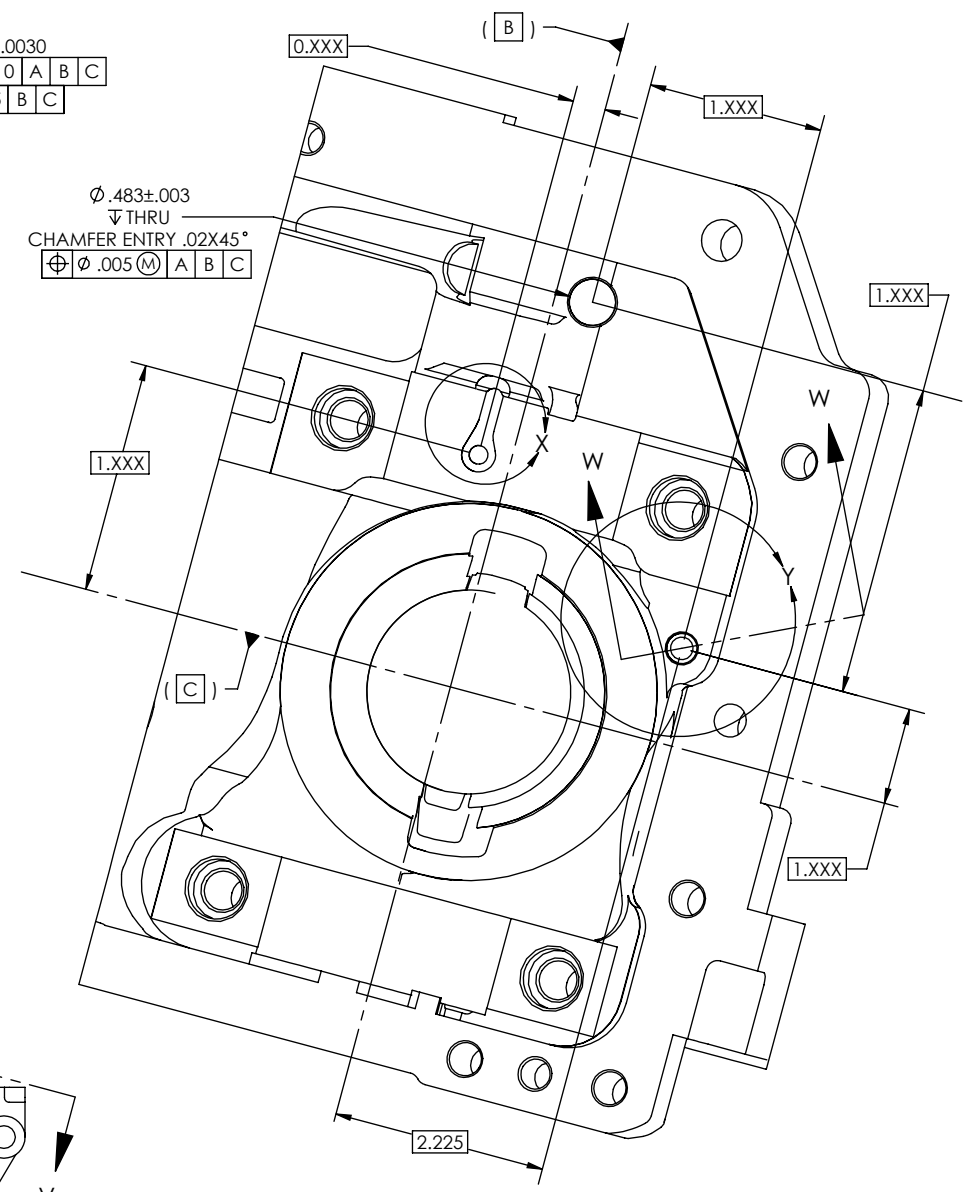
SECTION W-W



DETAIL Y



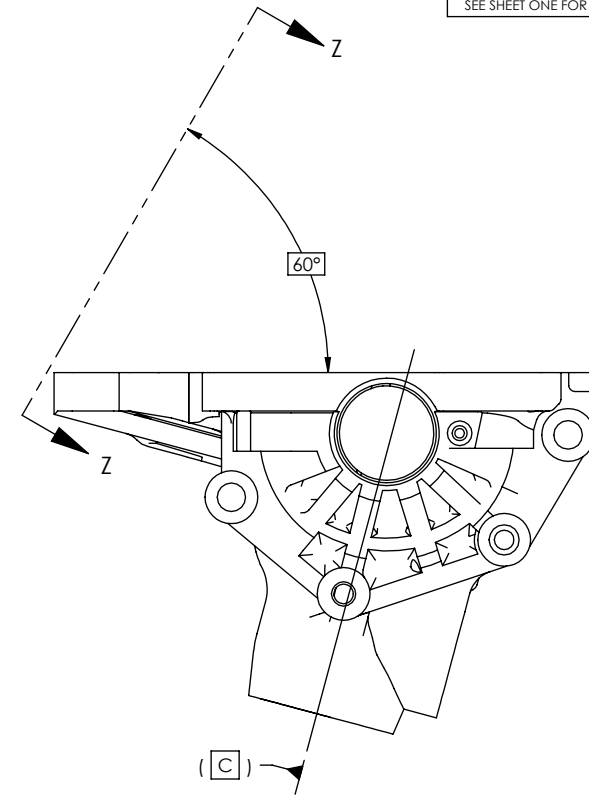
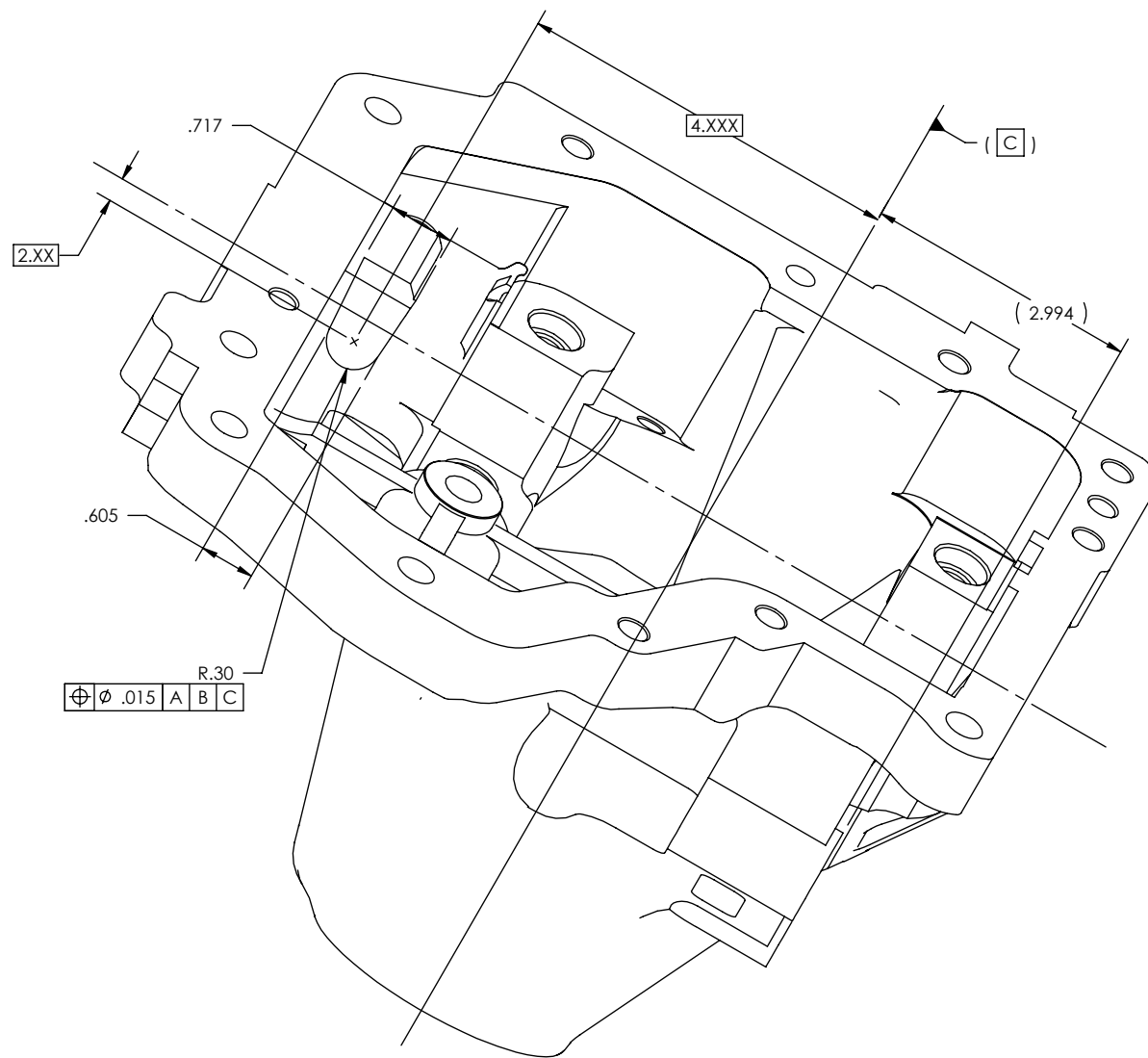
SECTION V-V



PROPRIETARY NOTICE: This drawing/information/statement contains proprietary trade secret information of Overspeed Motorsports ("OS"). It is submitted to you for purposes of a business relationship with OS and is provided to you under a condition of confidentiality. This drawing/information/statement may be used by you solely for the purpose for which it is furnished and returned to OS upon request. Except for purposes of the actual or proposed business relationship with OS, this drawing/information/statement and the information contained therein is not to be reproduced, transmitted, disclosed, or used in whole or in part, without the express written authorization of OS.



DWG NO:	BIG HALF	REV LTR NEW V68
APVD	L.MARKOSSIAN	07/16/2021
SHEET SIZE:	A	SCALE: NONE
Sheet 13 of 32		



SECTION Z-Z



PROPRIETARY NOTICE: This drawing/information/statement contains proprietary trade secret information of Overspeed Motorsports ("OS"). It is submitted to you for purposes of a business relationship with OS and is provided to you under a condition of confidentiality. This drawing/information/statement may be used by you solely for the purpose for which it is furnished and returned to OS upon request. Except for purposes of the actual or proposed business relationship with OS, this drawing/information/statement and the information contained therein is not to be reproduced, transmitted, disclosed, or used in whole or in part, without the express written authorization of OS.

APVD L.MARKOSSIAN

07/16/2021

SHEET SIZE: A

SCALE: NONE

Sheet 14 of 32

DWG NO:

BIG HALF

REV LTR
NEW
V68