

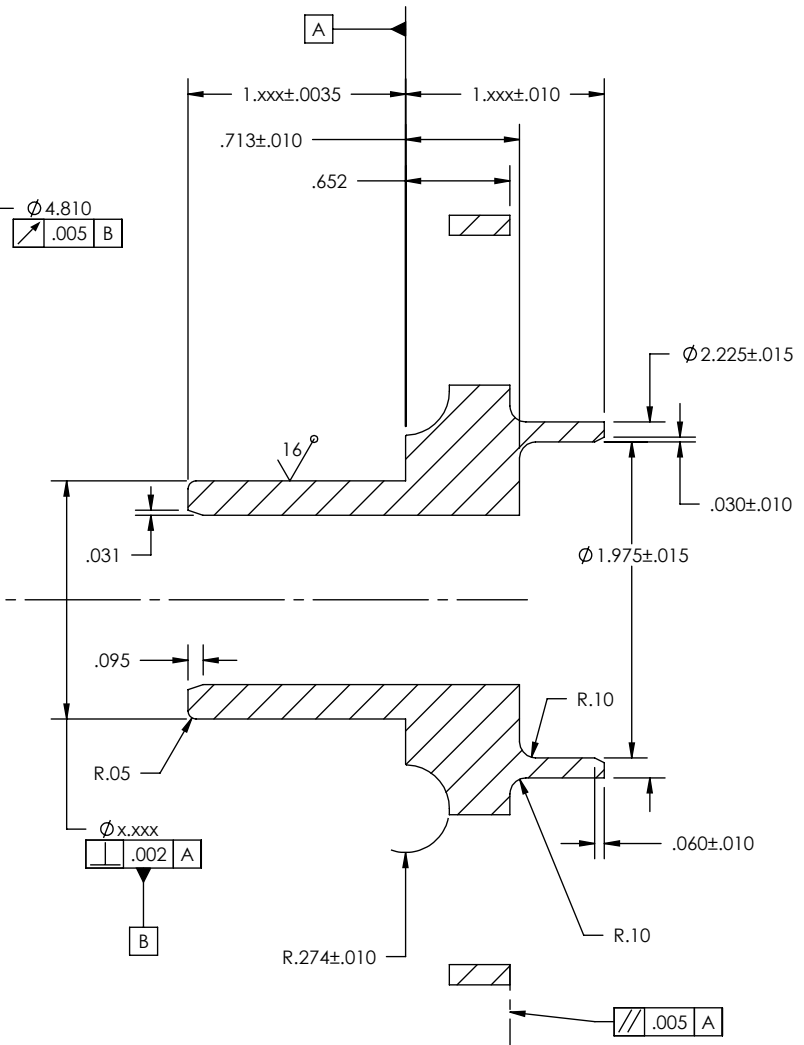
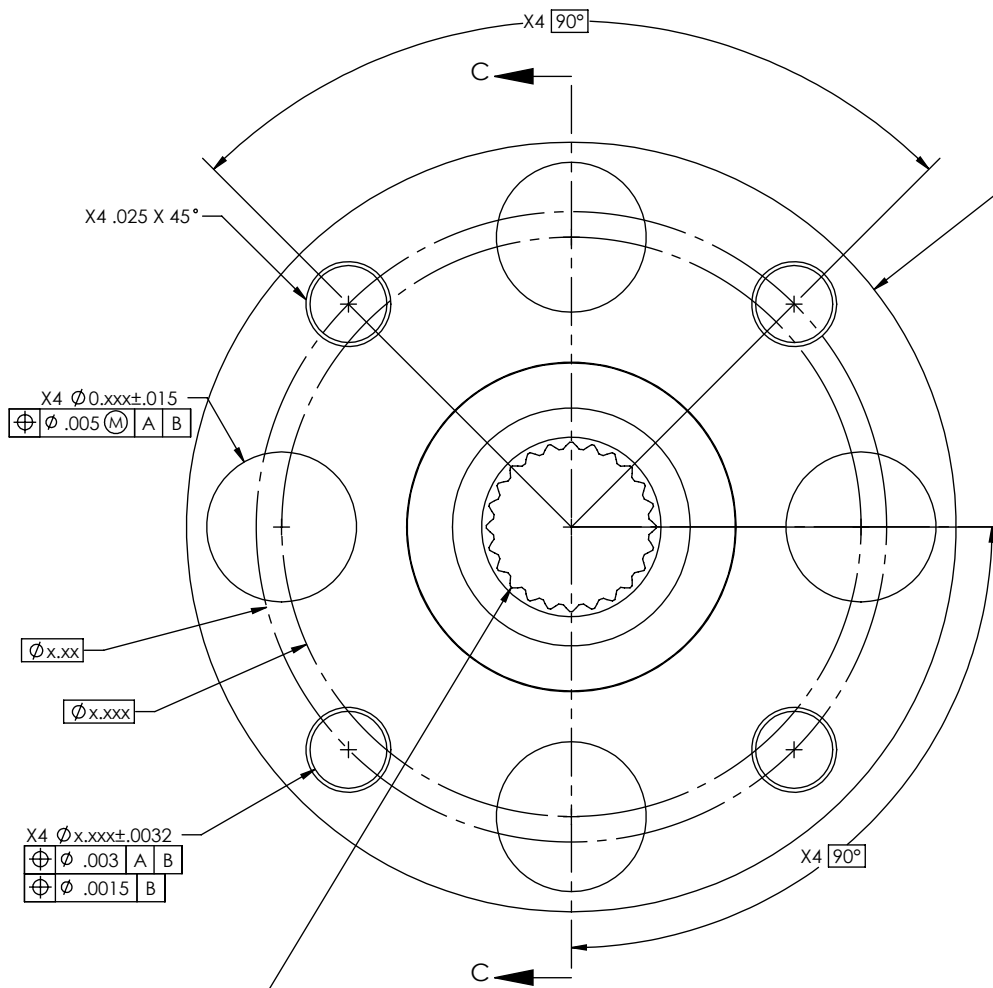
REV	DESCRIPTION	DATE	APPROVED
NEW	ORIGINAL RELEASE	09/14/2020	L.MARKOSSIAN
-	-	-	-
-	-	-	-

GENERAL NOTES:

- 10. OIL ALL PARTS POST MACHING FOR SHIPPING. PACKAGE TO PREVENT DAMAGE IN SHIPPING AND HANDLING.
- 11. DO NOT SCALE DRAWING.
- 12. DEBURR AND BREAK EDGES .005 TO .015. INTERNAL CORNER R.005 TO R.020.
- 13. SURFACE ROUGHNESS SHALL NOT EXCEED 63 MICROINCHES R_a PER ASME B46.1

MATERIAL NOTES:

MAKE ALL PARTS FROM 4340 ALLOY. NO PRE OR POST TREATMENT REQUIRED.



MODLUE	.0XXX
NUMBER OF TEETH	24
PRESSURE ANGLE AT PITCH DIAMETER	XX°
TOOTH THICKNESS AT PITCH DIAMETER	.0XXX
MAJOR DIAMETER	1.XXX
MINOR DIAMETER	.975

SPLINE IN ACCORDANCE TO
ANSI B92.1-1996 TABLE XX CLASS X (SEE TABLE)
SPLINE MUST BE CUT ± 0.005 B

UNLESS OTHERWISE SPECIFIED
DIMENSIONS ARE IN INCHES
- TOLERANCES -

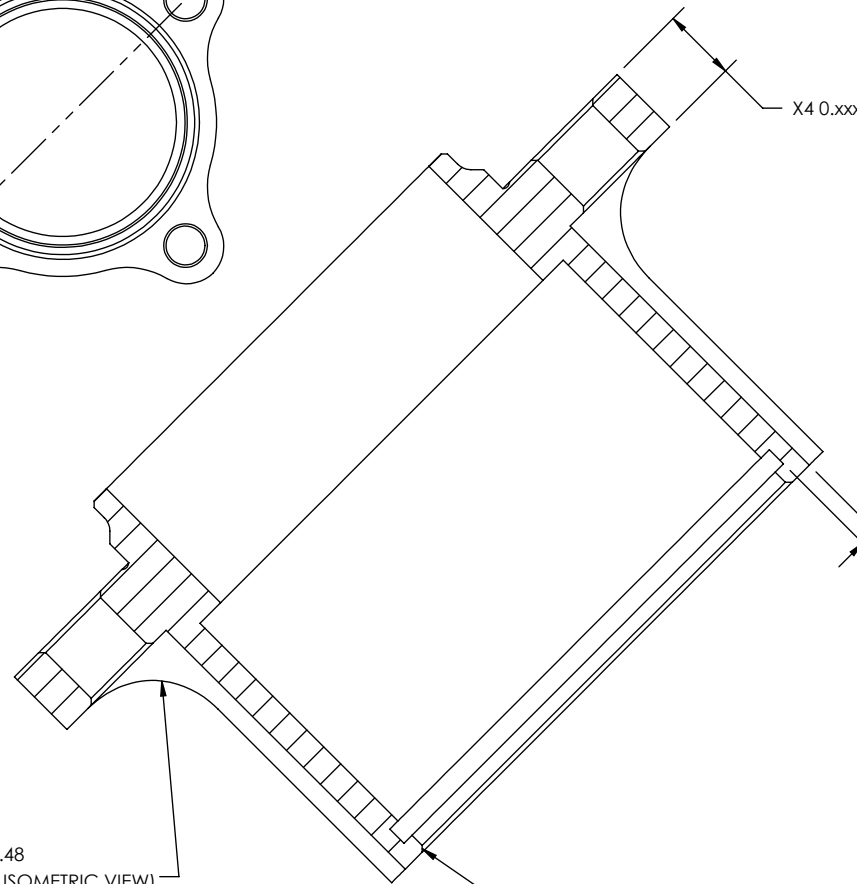
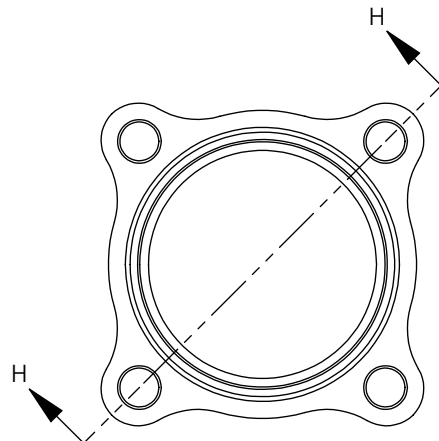
DECIMALS	ANGULAR
.XX	XX°
.XXX	XX.X°
.XXXX	XX.XX°

SUBSURFACE FINISH
125 μINCH RG PER ASME B46.1
INTERPRET TOLERANCES PER ASME Y14.5M-2009

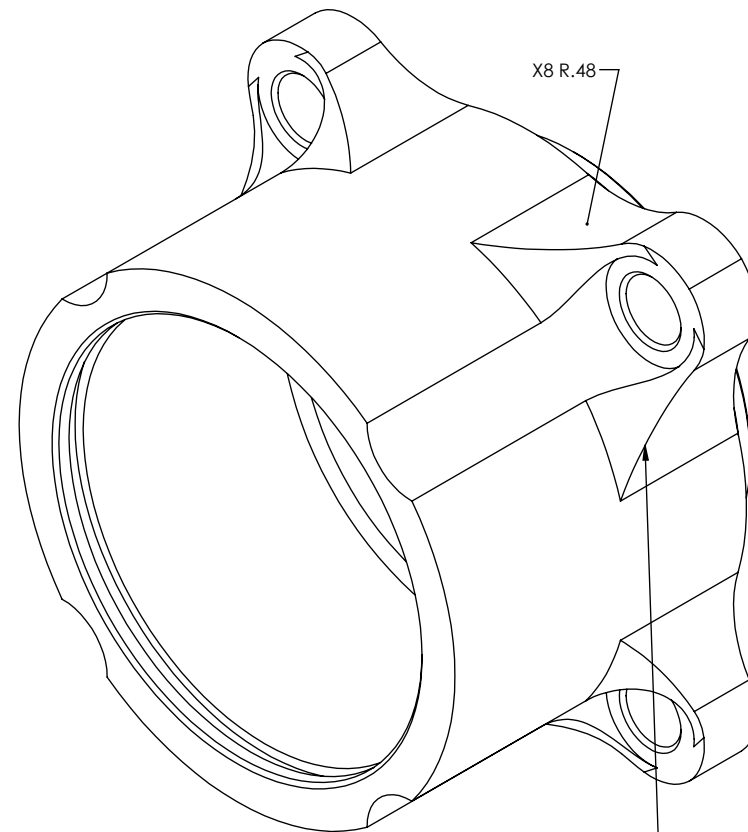
DWG NO: SPINDLE, IMPULSE RS

REV LTR
NEW
VO

PROPRIETARY NOTICE: This drawing/information/statement contains proprietary trade secret information of Overspeed Motorsports ("OS"). It is submitted to you for purposes of a business relationship with OS and is provided to you under a condition of confidentiality. This drawing/information/statement may be used by you solely for the purpose for which it is furnished and returned to OS upon request. Except for purposes of the actual or proposed business relationship with OS, this drawing/information/statement and the information contained therein is not to be reproduced, transmitted, disclosed, or used in whole or in part, without the express written authorization of OS.



SECTION H-H



X4 DEBURR EDGE PER NOTE 12

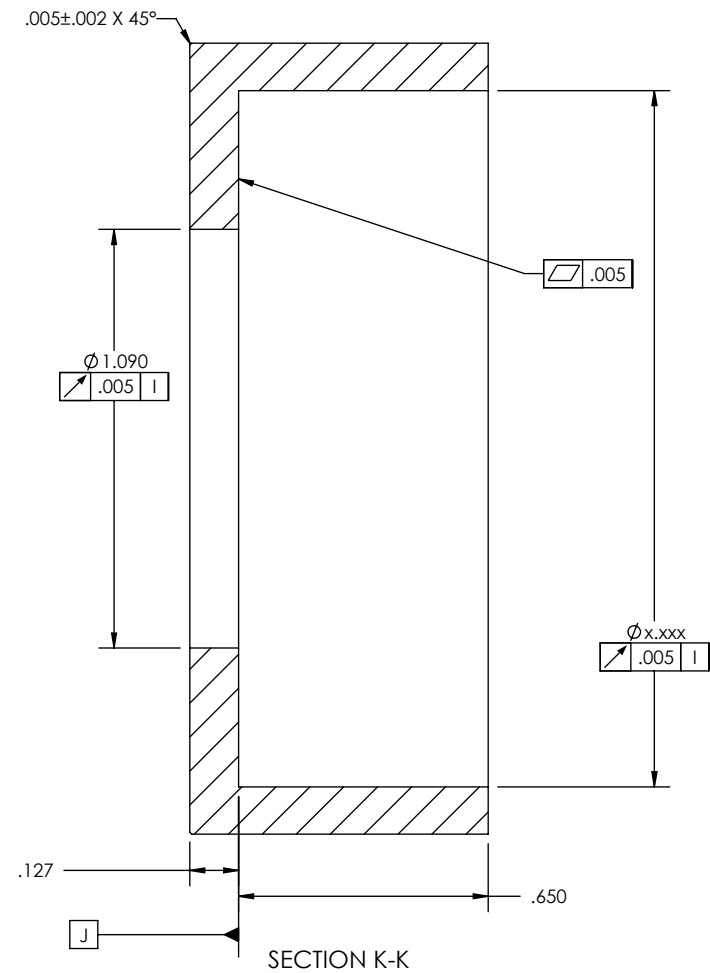
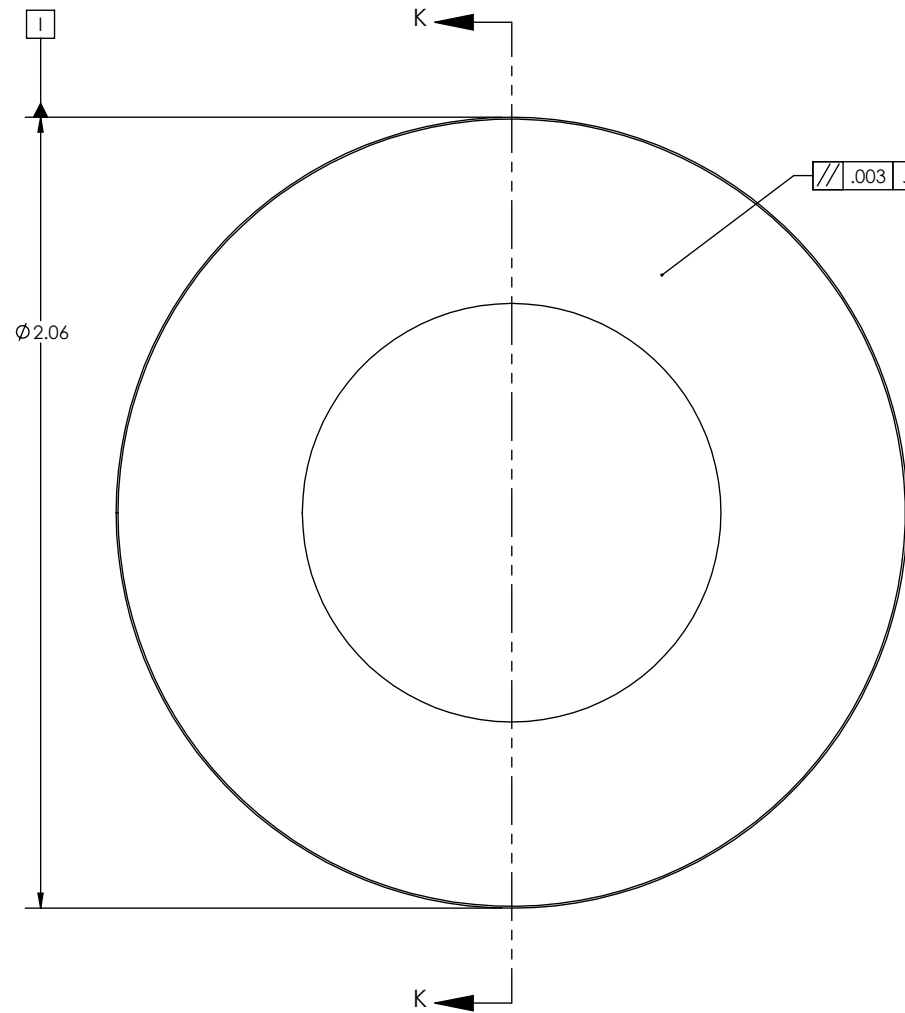
PROPRIETARY NOTICE: This drawing/information/statement contains proprietary trade secret information of Overspeed Motorsports ("OS"). It is submitted to you for purposes of a business relationship with OS and is provided to you under a condition of confidentiality. This drawing/information/statement may be used by you solely for the purpose for which it is furnished and returned to OS upon request. Except for purposes of the actual or proposed business relationship with OS, this drawing/information/statement and the information contained therein is not to be reproduced, transmitted, disclosed, or used in whole or in part, without the express written authorization of OS.

APVD L.MARKOSSIAN

09/14/2020



DWG NO:	HUB, IMPULSE RS	REV LTR
		NEW
		VO
SHEET SIZE: A	SCALE: NONE	Sheet 3 of 4



PROPRIETARY NOTICE: This drawing/information/statement contains proprietary trade secret information of Overspeed Motorsports ("OS"). It is submitted to you for purposes of a business relationship with OS and is provided to you under a condition of confidentiality. This drawing/information/statement may be used by you solely for the purpose for which it is furnished and returned to OS upon request. Except for purposes of the actual or proposed business relationship with OS, this drawing/information/statement and the information contained therein is not to be reproduced, transmitted, disclosed, or used in whole or in part, without the express written authorization of OS.



DWG NO: CUP LOCK WASHER, IMPULSE RS
 REV LTR NEW V0